

STURDY FABRIC BASKET

finished size > 8" wide by 5" high by 5" deep.



This fabric basket is quick and easy to create and is made durable with a Peltex interfacing. All you need is two fat quarters (or large scraps), some Peltex and a scrap of leather or an old belt for the handles (which are optional). The pattern also includes directions for creating ANY SIZE basket and a cute patchwork variation. **Share your pics with #sturdyfabricbasket!**



materials

- One fat quarter main fabric
- One fat quarter lining fabric (I recommend a non-directional small print or a solid)
- Peltex 71F single-sided fusible interfacing
- Leather or a belt for handles (optional)
- Embroidery floss (optional)
- Pattern pieces (page 6)

a few notes...

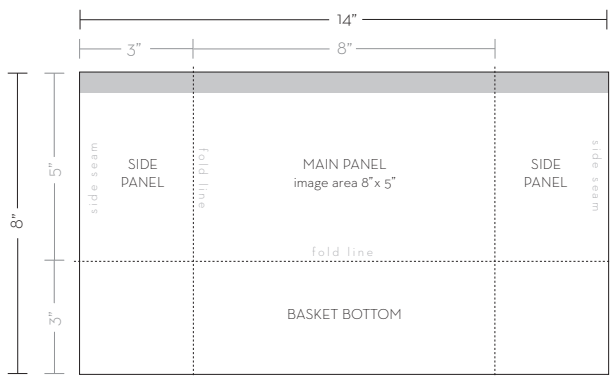
- Read through the entire pattern before beginning.
- All seam allowances are 1/2".
- RST = right sides together, WST = wrong sides together
- Fat quarter = approx 18" x 20"
- I used quilting weight organic cotton here, but you can also use a thin linen blend or chambray. Lightweight canvas could be used for the main body but I wouldn't recommend it for the lining as it may be hard to wrap over the edge.

cutting directions

Print pattern pieces and cut out around the outer black lines (the center gray lines and dots are placement indicators), set aside.

MAIN FABRIC

If using a **non-directional print**, cut one piece 14" x 15", set aside. If using a **directional print**, cut two pieces 14" w x 8" high (see piecing diagram below for specifics on where to place a focal image). Place your two pieces RST with the pattern running the same direction and sew along the bottom 14" dimension. Press seam open. Your directional prints should be going in opposite directions,

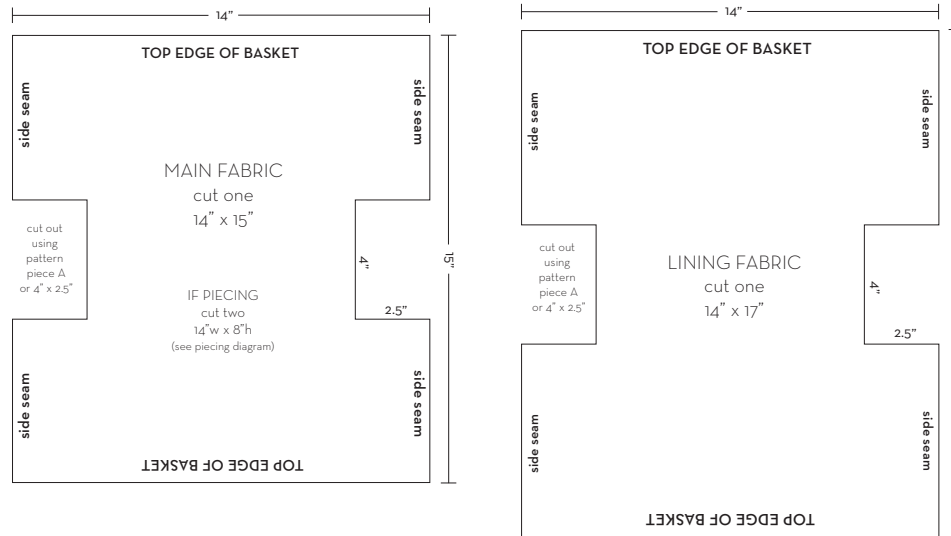


cutting directions (continued)

LINING FABRIC

Cut one piece 14" x 17"

I recommend using a non-directional small print or a solid for the lining. You will only see about 1/2" on the outside of the basket which is why a small print is best and because the lining folds over the edge of the outside of the basket, a directional print would be upside down either on the inside or on the outside of the basket.

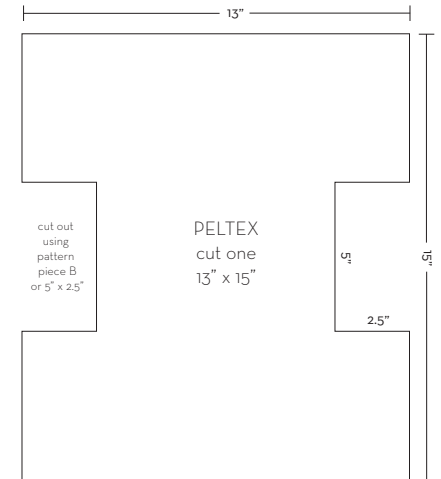


PELTEX 71F (interfacing)

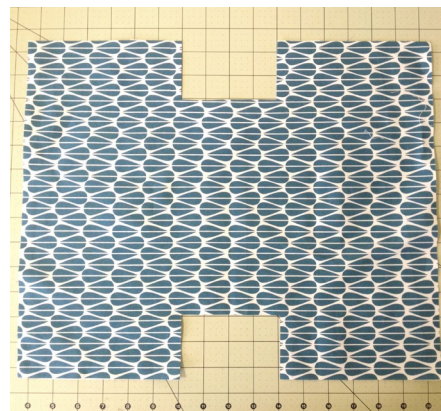
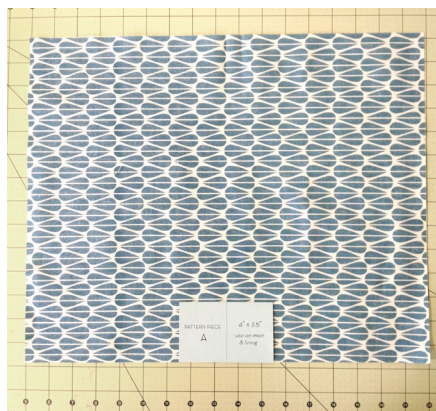
Cut one piece 13" x 15"

LEATHER (for handles - optional)

Cut two pieces 6" x 3/4"

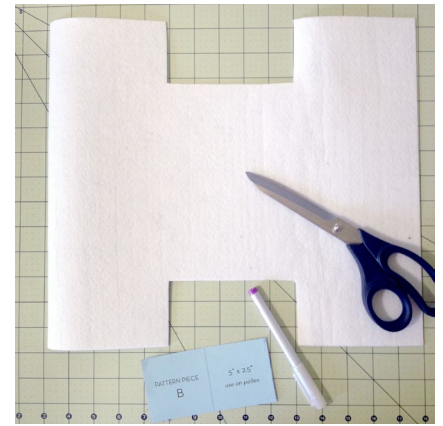
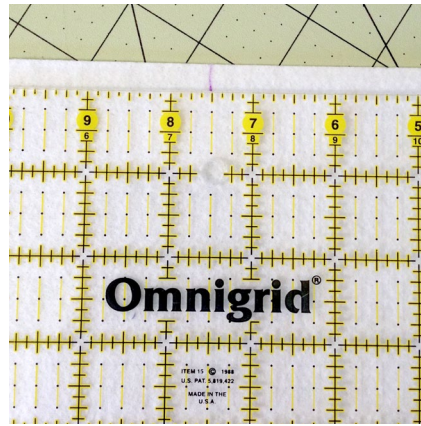


Fold the main fabric in half, WST, and crease with your finger to mark the center of the longest dimension. Place pattern piece A centered on the fold. Trace and cut out with scissors. Repeat on opposite edge. Repeat these steps with the lining fabric.



cutting directions (continued)

On the Peltex, mark the center of the 15" dimension along both 15" edges. Place pattern piece B centered on the mark along one edge. Trace and cut out with scissors. Repeat on top edge. Set aside.

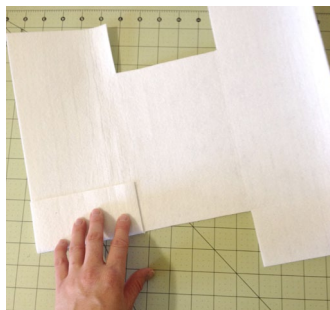
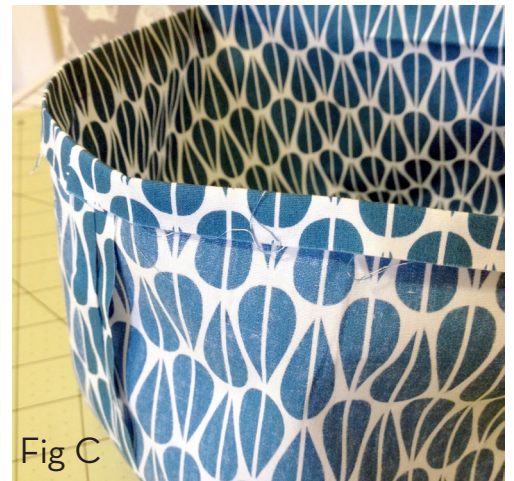
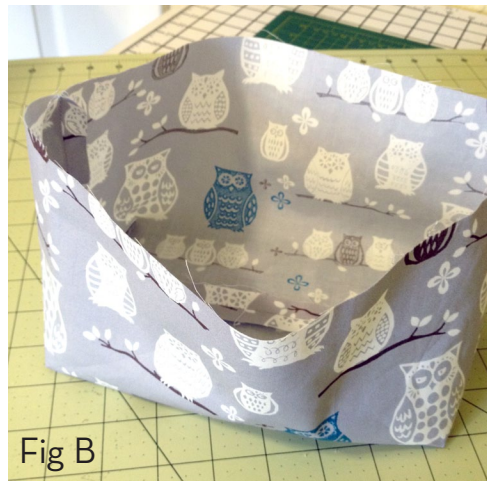


constructing the basket

Fold the main fabric in half, RST, lining up the top 14" edges. Sew the two short sides with a 1/2" seam, press seams open.

Next, open up your piece with the center of your fabric (where your fold just was) flat on the table. Fold one side seam side in towards the center laying flat along the middle section of the fabric, lining up the bottom side openings and sew with a 1/2" seam (Fig A). Repeat with the other side. Turn your piece right side out and set aside (Fig B).

Repeat the above steps with the lining fabric but leave inside out. Press the top edge over, WST, 1/2" (Fig C) and set aside.



Next, take your Peltex and firmly finger press a crease at each of the 'seams' making sure to keep the fusible side out. This helps form the basket shape. I like to leave it folded up under a heavy book for a few hours or overnight to help press the seams crisp. Using a Herra Marker or Bone folder to "score" the fold lines also really helps!

If desired, you can sew the side flaps together for extra stability. Fold the Peltex up into the basket shape with the fusible side out. Butt the edges of the side flaps up against each other and sew a few stitches at the top and where it meets the bottom.



construction (cont.)

If you did not sew the side seams, fold all sides of the Peltex into the center and insert into your main fabric body. (If you did stitch the peltex, pull the fabric up around it, like putting on clothes!) Open up the Peltex and adjust the placement as needed. Be sure to push it tight into the corners and seams and gently pull your fabric up from the outside to get a tight fit.



Once your Peltex is in place, hold a folded towel or oven mitt in one hand inside of your basket and press with a hot steam iron from the outside against your hand, one side at a time, to fuse the fabric to the Peltex (Fig D below).

Next, insert your lining into the basket, once again pushing tight into the seams and adjusting as necessary. The lining should extend up over the top edge of the basket a bit over 1/2" (Fig E).

Fold the lining down over the edge of the basket (Fig F). You now have a few options for finishing this step. You can top stitch in place using your machine, though the Peltex is a bit tricky in the corners and I recommend using a walking foot to avoid bunching and shifting. Alternatively you can create a more decorative stitch by hand with embroidery floss or for a clean look, you can use a bit of fabric or Elmer's glue along the top rim of the basket before folding the lining over (which is what I did here).



Fig D

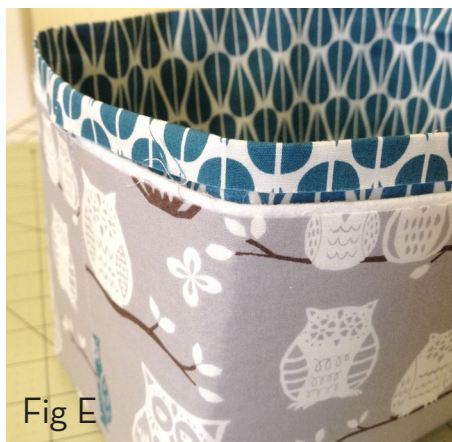


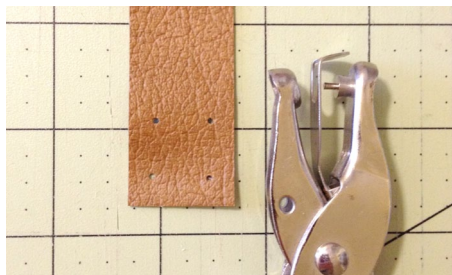
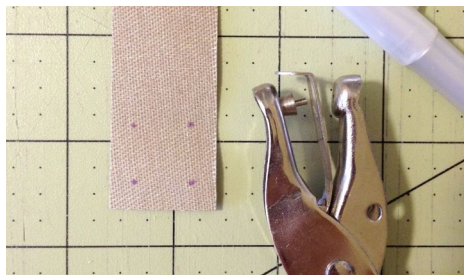
Fig E



Fig F

attaching the handles (optional)

If using a 3/4" strip for the handles, use pattern C to mark four dots on each end on the wrong side of your handles. If using a different sized strip (such as an old belt), mark four holes in a similar orientation. Punch a hole thru each dot using a small hole punch or awl.



attaching the handles (continued)

I recommend placing the handles so that each side is centered between the outer edge of the basket and the center seam and with the punched holes just below the folded-over lining. You can also line up the top holes to fall within the lining so you are stitching through and helping to secure in place if you did not top stitch.

Using four strands of embroidery floss, hand stitch your handles in place going through the holes and all layers of your basket. Begin by inserting your needle through one hole in the handle from the back to the front and then place your handle against the basket. This will hide your knot. You can stitch to create any pattern you like, whether a square, an X or two lines running vertical or horizontal. Repeat your pattern at least three times for durability and end by hiding your knot in between the leather and fabric once again. Repeat for the other handle and you're done!



Now wasn't that easy? Go on and make some for every room of your house and as gifts for everyone you know!

Fill one with baby supplies for a shower gift, food items as a hostess gift, craft supplies for a friends birthday.

Share your photos and find inspiration with the tag #sturdyfabricbasket!

Enjoy!

variations

LINING FOLD OVER

If you would like the lining fold over to be larger, just add four times the amount you would like to see from the front to the longer dimension of the

lining piece. As written, the lining piece is cut 2" wider than the main fabric piece. This makes the lining 1" taller than the basket. It is folded 1/2" and then wraps over the basket edge 1/2". If you would like to see 1" of lining folded over the top of the basket, you would cut your lining piece 19" wide (rather than 17"). This would make your lining 2" taller than your basket. You would press the top edge of the lining over 1" and then have 1" left to fold down over the top edge of your basket.

INTERFACING

This pattern is designed to create a sturdy 'hard-sided' basket, though if you would like a softer basket, the same pattern can be used with some simple modifications to the interfacing. Leave out the Peltex 71F layer and instead use a fusible fleece, soft & stable, or quilt a piece of batting to the main fabric and/or the lining before cutting to size and sewing into shape. I would then recommend top stitching the lining in place after folding it over.

HANDLES

The handles can also be attached to the inside of the basket for a different look. I love sourcing materials from my local thrift store. You can find old jackets, travel bags, suitcases, purses, pouches, wallets and belts for super cheap that you can deconstruct for materials. This is where I get all my leather and vinyl for sewing projects. The belt I used for the handles shown here was only 50¢!

Find the directions for creating any size basket on page 7 and the patchwork variation on page 8.

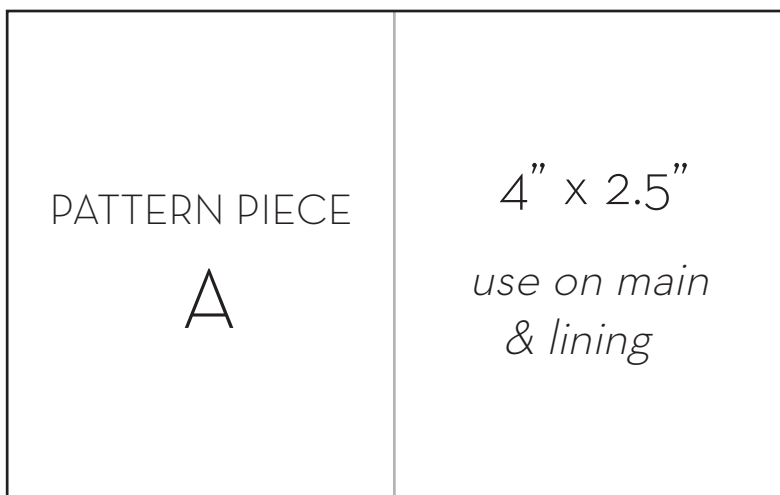


Featured fabrics are from the line Westwood by Monaluna.



STURDY FABRIC BASKET

finished size > 8" wide by 5" deep by 5" high.



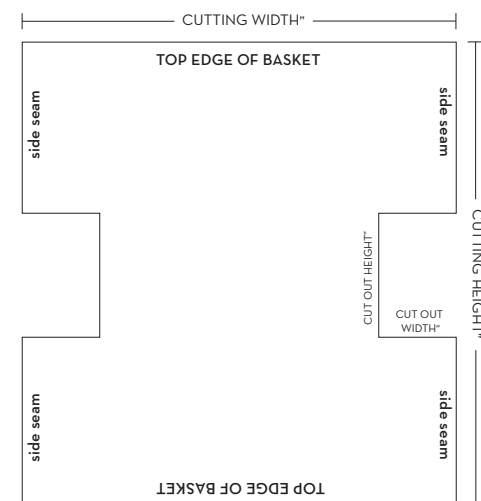
CUSTOM SIZED BASKETS



With the simple equations outlined below, you can create any size basket – big or small! After cutting your pieces, you will follow the same construction directions as the original size basket beginning on page 3.

The first step is to determine the width, height, and depth that you want your finished basket to be. The width is the dimension across the front of your basket, the height is how tall it stands and the depth is the dimension across the side. This pattern will work for ANY size basket from 1" to 100"! Ok, that would be a really big basket, but you get the point.

I recommend writing down your dimensions on a sheet of paper and then drawing out the diagrams for each piece as you go, to help keep things clear and organized. You will be figuring out the cutting dimensions for three pieces – your main outer fabric, your lining fabric, and the Peltex interior. All measurements and math are based on a 1/2" seam allowance. When referring to basket in the equations, these are the dimensions of your finished basket. Let's get started!



MAIN OUTER FABRIC

Cutting Width = Width of basket + depth of basket + 1"

Cutting Height = Height of basket multiplied by 2 + depth of basket

Cut Out Width = Half the depth of basket

Cut Out Height = Depth of basket minus 1"

I will use the tall basket shown above right as an example. The finished dimensions of that basket are 4" wide by 6" high and 4" deep. The cutting dimensions for my main outer fabric, following the equations above, would be cutting width 9", cutting height 16", cut out width 2" and cut out height 3". Let's continue!

LINING FABRIC

Cutting Width = Same cutting width as main outer fabric

Cutting Height = Cutting height of main outer fabric + 2"

Cut Out Width = Same as main outer fabric

Cut Out Height = same as main outer fabric

PELTEX INTERIOR

Cutting Width = Width of basket + depth of basket

Cutting Height = Height of basket multiplied by 2 + depth of basket

Cut Out Width = Half the depth of basket

Cut Out Height = Depth of basket

And there you have it! You can now create your own custom baskets. One note on the lining. The measurements are based on a half inch foldover. The lining is cut 2" taller than the outer fabric to account for one inch on either side (folded in half, then folded over). If you would like a larger or smaller lining foldover on your basket, determine the finished height you would like the foldover to be, multiply it by four, and add this measurement to your main outer fabric cutting height to determine your lining fabric cutting height.



lillyella STITCHERY

PATCHWORK VARIATION

finished size > 8.5" wide by 4.75" high and 5.5" deep.



I modified the finished size of the basket a bit to work proportionally with 2.5" mini charm squares to create this fun patchwork variation. You will need sixty-one 2.5" mini charm squares pieced with a 1/4" seam in the arrangement shown in Figure A to create the outside of the basket.

Modified cutting directions for the lining and peltex interfacing are included below and the pattern pieces for the cut outs are on the following page. The assembly instructions for the basket are the same as the original pattern.

PATCHWORK BODY

After piecing your mini charms, **trim your piece to 15" square**, centering the measurement with the center of your piece (FIG B.). Note that you have areas around the outer edge with no fabric (shown in yellow on FIG B) but they will be sewn into the seam and covered with the fold over lining. If preferred, you can add an extra row of squares around your main body when piecing.

Next, use Pattern Piece {patchwork} A to cut as shown below (detailed cutting directions on page 2).

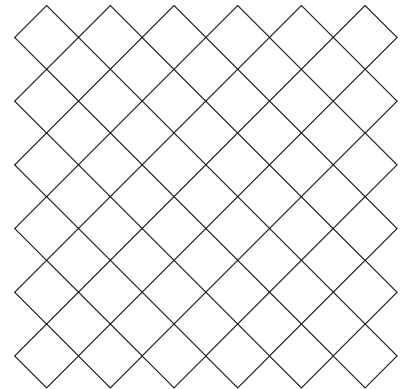


FIGURE A

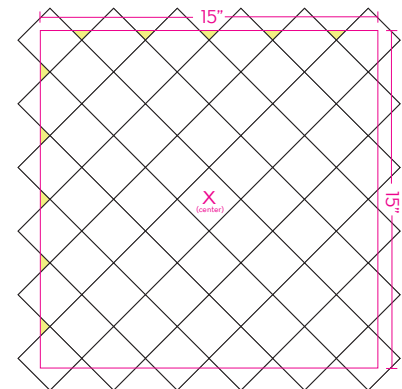


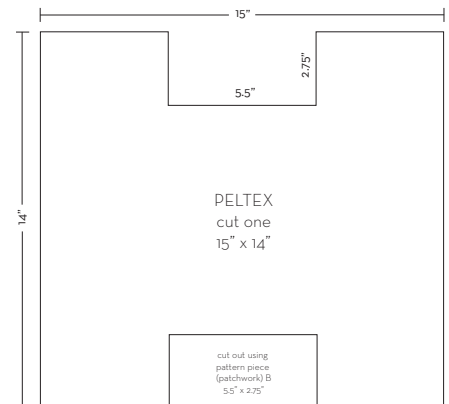
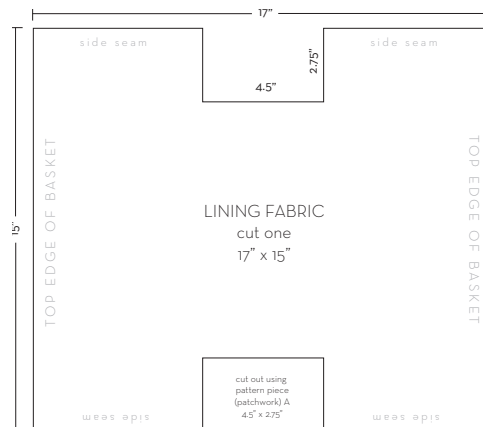
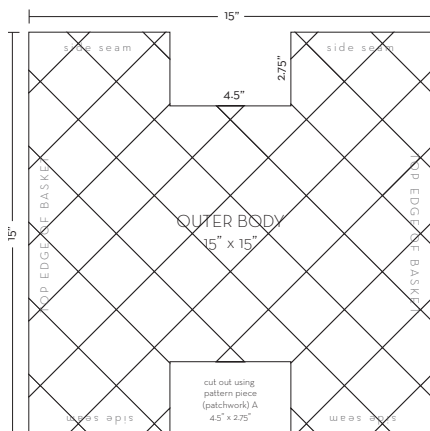
FIGURE B

LINING FABRIC

Cut one piece 15" x 17" and use pattern piece {patchwork} A to cut as shown in the diagram.

PELTEX 71F (interfacing)

Cut one piece 13" x 15" and use pattern piece {patchwork} B to cut as shown in the diagram.



You can now follow the basket assembly instructions beginning on page 3 to construct your basket.

Fabrics featured in the patchwork basket shown above are from various Cotton & Steel lines with Robert Kaufman Rustica Chambray for the lining and a thrift shop belt for the handles.



STURDY FABRIC BASKET { PATCHWORK VERSION }

finished size > 8.5" wide by 5.5" deep by 4.75" high

